

BY ALYNDA WHEAT

# WHAT to WATCH

A day-to-day guide to notable programs\*



Would it help if we told you meerkats were in the mongoose family? No?

**MUST WATCH OF THE WEEK**

**SEASON PREMIERE**

**FRIDAY 8.10**

**8:30-9PM**

**Meerkat Manor** Animal Planet, TV-G

Warring "families," turf battles, hairy soldiers—this docu-soap (narrated by Sean Astin) is the animal kingdom's answer to *The Sopranos*. Carving out a living in the harsh, predator-laden plains of the African Kalahari (New Jersey, hello?!), *Manor's* Tony is Flower, the meerkat matriarch with the burden of the world on her shoulders as the show's third season begins. Who will stave off their archenemies, the Zappas and the Commandos? How will she keep her offspring safe from harm, and her Carmela (his name is Zaphod) in line? Sub in grubs and millipedes for manicotti and grappa, and you've got a show you can't refuse. **A-**—Leah Greenblatt

## Monday 8.06

Will finds a way



**SERIES DEBUT**

**9-10PM**

**Fat March**

ABC, TV-PG-L

Look at that title—clearly we wanted to hate this show about 12 large people walking 570 miles to split \$1.2 million. But like *The Biggest Loser*, *March* inspires in spite of its tacky moniker. Aches, rain, flagging spirits—the drudge of the trudge is just part of the quest. It's also about what's lost—and gained. **B**

## Tuesday 8.07

*Series Debut*

**8-9PM**

**Power of 10**

CBS

Thousands of people surveyed, top answers on the board. Name a game show that takes the family out of *Family Feud*. Survey says?

**9-9:30PM**

**The Bill Engvall Show**

TBS, TV-PG

Susan sells her muffins. (I'd like this show if that wasn't actually about baked goods.)

*Series Debut*

**10-11PM**

**LA Ink**

TLC, TV-PG-D

Quit? Fired? Whatever—Kat Von D's got a new place to hang up her needles.

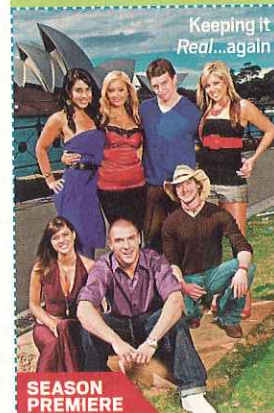
**10-11PM**

**Damages**

FX, TV-MA

Ellen, don't sell yourself short. Patty was looking for a quick, brilliant, young legal mind—who was also dumb as a brick. You're perfect!

## Wednesday 8.08



Keeping it Real...again

**SEASON PREMIERE**

**10-11PM**

**The Real World: Sydney** MTV, TV-14

It's *still* got a party girl, a fish out of water, and a too-smart-for-the-show ethnic type. After 15 years of backhanded slaps, hot tubs, and hookups, it's not like *World* can surprise us. Oh, but it does. Meet level-headed Parisa, who sees her roomies like we do—with horror and disgust. Finally. **B-**—Archana Ram